



Excellium Diamond Report

GRADING RESULTS

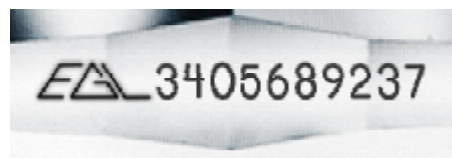
Natural Diamond	Type IaAB
Shape & Cut Style	Round Brilliant
Carat Weight	1.51 Ct.
Color Grade	D
Clarity Grade	VS1
Cut Grade	Excellent

ADDITIONAL GRADING INFORMATION

Measurements	7.32 - 7.28 x 4.57 mm
Polish	Excellent
Symmetry	Excellent
Fluorescence	Slight Blue

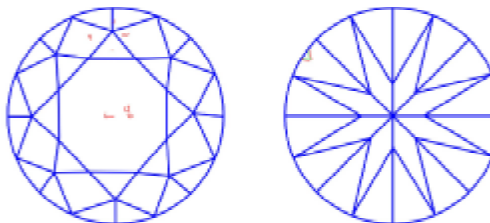
COMMENTS

- Diascript of "EGL Report number" appears on the girdle.
- 8 HEARTS & 8 ARROWS - This Diamond was polished utilizing superior precision & craftsmanship, its exquisite proportions generate the appearance of 8 Hearts & 8 Arrows, when viewed at the correct angle & under the proper lighting conditions.
- IDEAL CUT inspired by Marcel Tolkowsky.

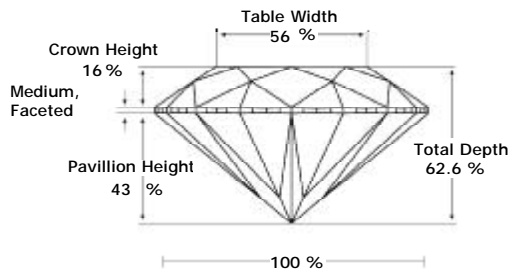


Clarity Representation - Magnification: x10

Internal characteristics shown in red. External characteristics and naturals shown in green. Extra facets shown in black. Symbols indicate nature and location of identified characteristics, not their actual size. Hairline feathers in girdle, minor bearding, and minor details of polish and finish not shown.

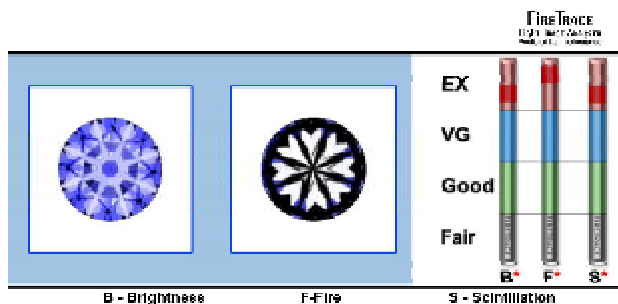


PROPORTIONS DIAGRAM



\* Profile for representation purposes only

LIGHT PERFORMANCE



Note: EGL watermark will appear under UV source.

ISO 9001-2008 / -IQNet-

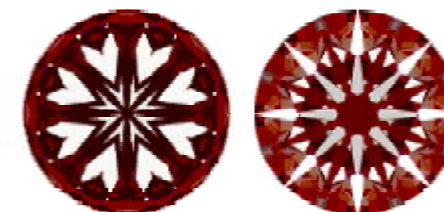
INTERNATIONAL CLARITY SCALE

Flawless	Internally Flawless
Very Very Slight Inclusion	VVS1 VVS2
Very Slight Inclusion	* VS1 * VS2
Slight Inclusion	SI1 SI2 SI3
	I1 I2 I3

INTERNATIONAL COLOR SCALE

Colorless	* D * E F
Near Colorless	G H I J
Tinted White	K L M
Very Light Yellow	N O P Q R
Light Yellow	S-Z
Fancy Yellow	

Hearts & Arrows



ONLINE VERIFICATION  
FOR CONFIRMATION ONLY

Online verification service at:  
[www.eglinternational.org](http://www.eglinternational.org)

