

Report Number : EGL1600911725

March 25, 2021



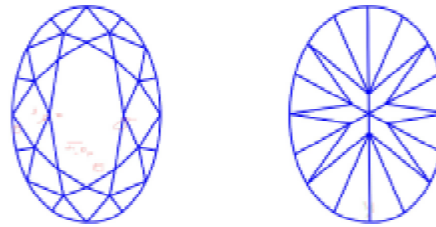
EUROPEAN GEMOLOGICAL LABORATORY

**GRADING RESULTS**

Natural Diamond  
 Shape & Cut Style **Oval**  
 Carat Weight **1.00 Ct.**  
 Color Grade **F**  
 Clarity Grade **SI2**

**Clarity Representation - Magnification: x10**

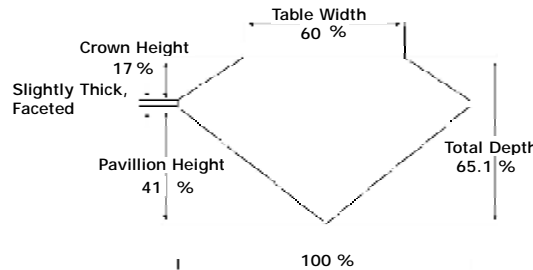
Internal characteristics shown in red. External characteristics and naturals shown in green. Extra facets shown in black. Symbols indicate nature and location of identified characteristics, not their actual size. Hairline feathers in girdle, minor bearding, and minor details of polish and finish not shown.



**ADDITIONAL GRADING INFORMATION**

Measurements **7.25 - 5.56 x 3.62 mm**  
 Polish **Very Good**  
 Symmetry **Very Good**  
 Fluorescence **Faint**

**PROPORTIONS DIAGRAM**



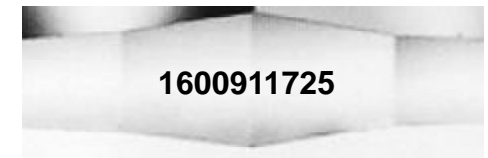
\* Profile for representation purposes only

**ISO 9001-2000 / -IQNet-**

**INTERNATIONAL CLARITY SCALE**

**INTERNATIONAL COLOR SCALE**

Flawless	Internally Flawless	Colorless	D E <b>* F *</b>
Very Very Slight Inclusion	VVS1	Near Colorless	G H I J
	VVS2		Tinted White
Very Slight Inclusion	VS1	Very Light Yellow	
	VS2		Inclusion
Slight Inclusion	SI1	Fancy Yellow	
	<b>* SI2 *</b>		
	SI3		
	I1		
	I2		
	I3		



**COMMENTS**

- Report number appears on the girdle.



Online verification service at:  
[www.eqlhk.com.hk](http://www.eqlhk.com.hk)

Note: EGL watermark will appear under UV source.