

Report Number : EGL1600327524

July 27, 2020



EUROPEAN GEMOLOGICAL LABORATORY

**GRADING RESULTS**

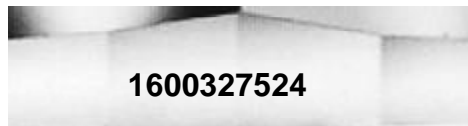
Natural Diamond  
 Shape & Cut Style                      Round Brilliant  
 Carat Weight                              1.20 Ct.  
 Color Grade                                F  
 Clarity Grade                                VS2  
 Cut Grade                                    Excellent

**ADDITIONAL GRADING INFORMATION**

Measurements            6.82 - 6.77 x 4.19    mm  
 Polish                                        Excellent  
 Symmetry                                    Excellent  
 Fluorescence                                Slight

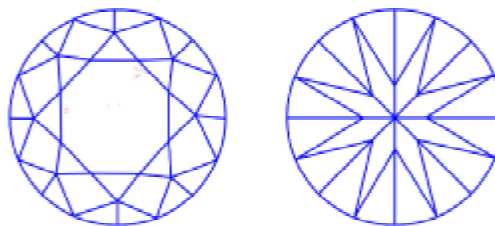
**COMMENTS**

- Report number appears on the girdle.
- "EXCELLENT IDEAL CUT"-The quality of the cut of this diamond achieves Excellence in symmetry and proportions, thus obtaining the optimal dispersion of light and brilliance.

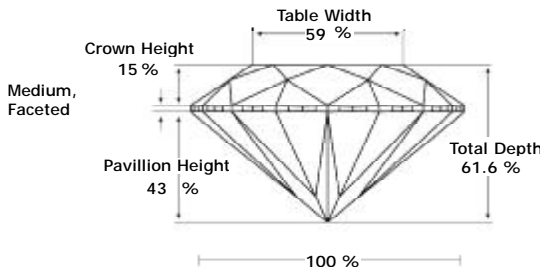


**Clarity Representation - Magnification: x10**

Internal characteristics shown in red. External characteristics and naturals shown in green. Extra facets shown in black. Symbols indicate nature and location of identified characteristics, not their actual size. Hairline feathers in girdle, minor bearding, and minor details of polish and finish not shown.



**PROPORTIONS DIAGRAM**



\* Profile for representation purposes only

**ISO 9001-2000 / -IQNet-**

**INTERNATIONAL CLARITY SCALE**

**INTERNATIONAL COLOR SCALE**

Flawless	Internally Flawless
Very Very Slight Inclusion	VVS1
	VVS2
Very Slight Inclusion	VS1
	* VS2 *
Slight Inclusion	SI1
	SI2
	SI3
Inclusion	I1
	I2
	I3

Colorless	D E * F *
Near Colorless	G H I J
	K L M
Very Light Yellow	N O P Q R
Light Yellow	S-Z
Fancy Yellow	

Online verification service at:  
[www.eqlhk.com.hk](http://www.eqlhk.com.hk)



Note: EGL watermark will appear under UV source.