

Report Number : EGL1600304317

July 08, 2020



EUROPEAN GEMOLOGICAL LABORATORY

GRADING RESULTS

Natural Diamond
 Shape & Cut Style Round Brilliant
 Carat Weight 1.22 Ct.
 Color Grade F
 Clarity Grade VS2
 Cut Grade Excellent

ADDITIONAL GRADING INFORMATION

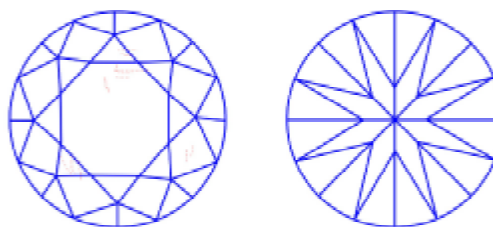
Measurements 6.89 - 6.84 x 4.23 mm
 Polish Excellent
 Symmetry Excellent
 Fluorescence None

COMMENTS

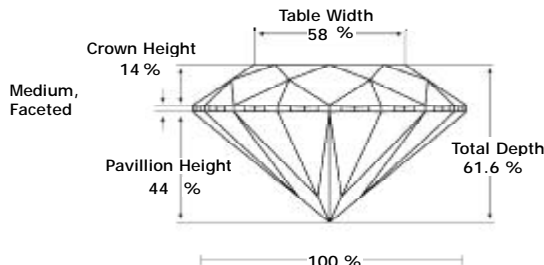
- Report number appears on the girdle.
- "EXCELLENT IDEAL CUT"-The quality of the cut of this diamond achieves Excellence in symmetry and proportions, thus obtaining the optimal dispersion of light and brilliance.

Clarity Representation - Magnification: x10

Internal characteristics shown in red. External characteristics and naturals shown in green. Extra facets shown in black. Symbols indicate nature and location of identified characteristics, not their actual size. Hairline feathers in girdle, minor bearding, and minor details of polish and finish not shown.



PROPORTIONS DIAGRAM



* Profile for representation purposes only

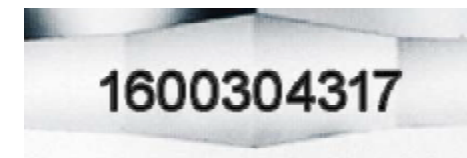
ISO 9001-2000 / -IQNet-

INTERNATIONAL CLARITY SCALE

| | |
|----------------------------|---------------------|
| Flawless | Internally Flawless |
| Very Very Slight Inclusion | VVS1 |
| | VVS2 |
| Very Slight Inclusion | VS1 |
| | * VS2 * |
| Slight Inclusion | SI1 |
| | SI2 |
| | SI3 |
| Inclusion | I1 |
| | I2 |
| | I3 |

INTERNATIONAL COLOR SCALE

| | | |
|-------------------|-----------------------|-------------|
| Colorless | D E * F * | |
| Near Colorless | G H I J | |
| | Tinted White | K L M |
| Very Light Yellow | N O P Q R | |
| | Light Yellow | S-Z |
| | Fancy Yellow | |



Online verification service at:
www.eqlhk.com.hk

Note: EGL watermark will appear under UV source.