

Report Number : EGL1600081824

January 14, 2020



EUROPEAN GEMOLOGICAL LABORATORY

**GRADING RESULTS**

Natural Diamond  
 Shape & Cut Style **Round Brilliant**  
 Carat Weight **0.50 Ct.**  
 Color Grade **G**  
 Clarity Grade **VS1**  
 Cut Grade **Excellent**

**ADDITIONAL GRADING INFORMATION**

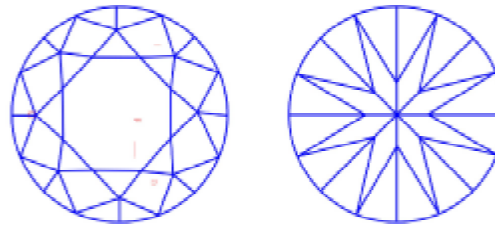
Measurements **5.13 - 5.08 x 3.13 mm**  
 Polish **Excellent**  
 Symmetry **Excellent**  
 Fluorescence **Slight**

**COMMENTS**

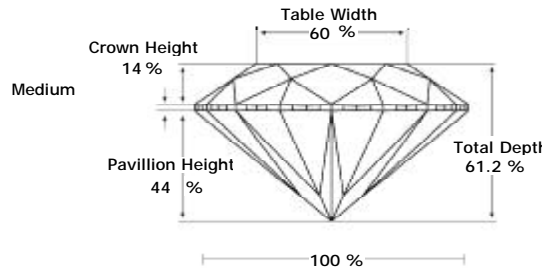
- Report number appears on the girdle.
- "EXCELLENT IDEAL CUT"-The quality of the cut of this diamond achieves Excellence in symmetry and proportions, thus obtaining the optimal dispersion of light and brilliance.

**Clarity Representation - Magnification: x10**

Internal characteristics shown in red. External characteristics and naturals shown in green. Extra facets shown in black. Symbols indicate nature and location of identified characteristics, not their actual size. Hairline feathers in girdle, minor bearding, and minor details of polish and finish not shown.



**PROPORTIONS DIAGRAM**



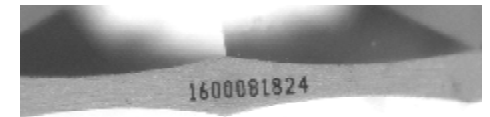
\* Profile for representation purposes only

**ISO 9001-2000 / -IQNet-**

**INTERNATIONAL CLARITY SCALE**

**INTERNATIONAL COLOR SCALE**

Flawless	Internally Flawless	Colorless	D E F	
Very Very Slight Inclusion	VVS1	Near Colorless	* G *	
	VVS2		H I J	
Very Slight Inclusion	* VS1 *	Tinted White	K L M	
	VS2		Very Light Yellow	N O P Q R
Slight Inclusion	SI1	Light Yellow		S-Z
	SI2			Fancy Yellow
	SI3			
Inclusion	I1			
	I2			
	I3			



Online verification service at:  
[www.eglab.com/bk](http://www.eglab.com/bk)

Note: EGL watermark will appear under UV source.