

Report Number : EGL1600075423

January 10, 2020



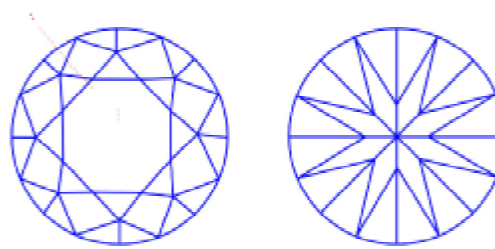
EUROPEAN GEMOLOGICAL LABORATORY

GRADING RESULTS

Natural Diamond
 Shape & Cut Style **Round Brilliant**
 Carat Weight **1.00 Ct.**
 Color Grade **F**
 Clarity Grade **VVS2**
 Cut Grade **Excellent**

Clarity Representation - Magnification: x10

Internal characteristics shown in red. External characteristics and naturals shown in green. Extra facets shown in black. Symbols indicate nature and location of identified characteristics, not their actual size. Hairline feathers in girdle, minor bearding, and minor details of polish and finish not shown.



ISO 9001-2000 / -IQNet-

INTERNATIONAL CLARITY SCALE

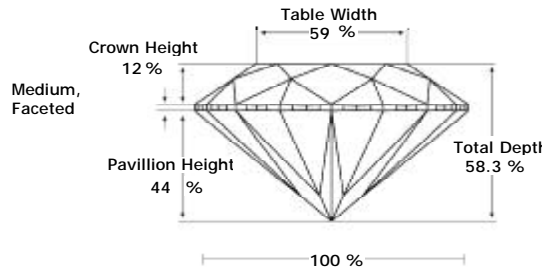
INTERNATIONAL COLOR SCALE

Flawless	Internally Flawless	Colorless	D E * F *
Very Very Slight Inclusion	VVS1	Near Colorless	G H I J
	* VVS2 *		Tinted White
Very Slight Inclusion	VS1	Very Light Yellow	
	VS2		Light Yellow
Slight Inclusion	SI1		
	SI2		
	SI3		
Inclusion	I1		
	I2		
	I3		

ADDITIONAL GRADING INFORMATION

Measurements **6.64 - 6.57 x 3.85 mm**
 Polish **Excellent**
 Symmetry **Excellent**
 Fluorescence **None**

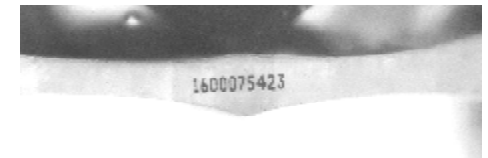
PROPORTIONS DIAGRAM



* Profile for representation purposes only

COMMENTS

- Report number appears on the girdle.
- "EXCELLENT IDEAL CUT"-The quality of the cut of this diamond achieves Excellence in symmetry and proportions, thus obtaining the optimal dispersion of light and brilliance.



Note: EGL watermark will appear under UV source.

Online verification service at:
www.eglab.com/bk

