

Report Number : EGL1506490227

December 05, 2019



EUROPEAN GEMOLOGICAL LABORATORY

**GRADING RESULTS**

Natural Diamond  
 Shape & Cut Style **Round Brilliant**  
 Carat Weight **0.52 Ct.**  
 Color Grade **G**  
 Clarity Grade **VS1**  
 Cut Grade **Excellent**

**ADDITIONAL GRADING INFORMATION**

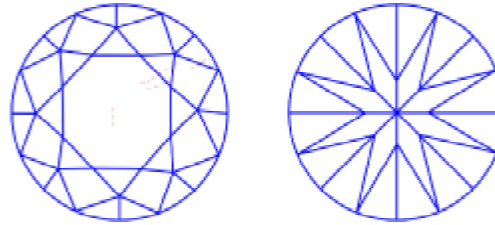
Measurements **5.12 - 5.09 x 3.26 mm**  
 Polish **Excellent**  
 Symmetry **Excellent**  
 Fluorescence **Very Slight**

**COMMENTS**

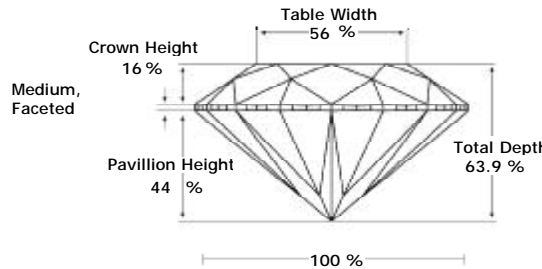
- Report number appears on the girdle.
- "EXCELLENT IDEAL CUT"-The quality of the cut of this diamond achieves Excellence in symmetry and proportions, thus obtaining the optimal dispersion of light and brilliance.

**Clarity Representation - Magnification: x10**

Internal characteristics shown in red. External characteristics and naturals shown in green. Extra facets shown in black. Symbols indicate nature and location of identified characteristics, not their actual size. Hairline feathers in girdle, minor bearding, and minor details of polish and finish not shown.



**PROPORTIONS DIAGRAM**



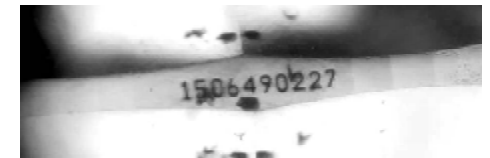
\* Profile for representation purposes only

**ISO 9001-2000 / -IQNet-**

**INTERNATIONAL CLARITY SCALE**

**INTERNATIONAL COLOR SCALE**

|                            |                     |                   |                       |
|----------------------------|---------------------|-------------------|-----------------------|
| Flawless                   | Internally Flawless | Colorless         | D<br>E<br>F           |
| Very Very Slight Inclusion | VVS1                | Near Colorless    | * G *                 |
|                            | VVS2                |                   | H<br>I<br>J           |
| Very Slight Inclusion      | * VS1 *             | Tinted White      | K<br>L<br>M           |
|                            | VS2                 |                   | N<br>O<br>P<br>Q<br>R |
| Slight Inclusion           | SI1                 | Very Light Yellow | S-Z                   |
|                            | SI2                 |                   | Fancy Yellow          |
|                            | SI3                 |                   |                       |
| Inclusion                  | I1                  | Light Yellow      | S-Z                   |
|                            | I2                  |                   |                       |
|                            | I3                  |                   |                       |



Note: EGL watermark will appear under UV source.

Online verification service at:  
[www.eglab.com/bk](http://www.eglab.com/bk)

