

Report Number : EGL1506399437

November 01, 2019



EUROPEAN GEMOLOGICAL LABORATORY

GRADING RESULTS

Natural Diamond
 Shape & Cut Style **Round Brilliant**
 Carat Weight **4.02 Ct.**
 Color Grade **G**
 Clarity Grade **VS2**
 Cut Grade **Excellent**

ADDITIONAL GRADING INFORMATION

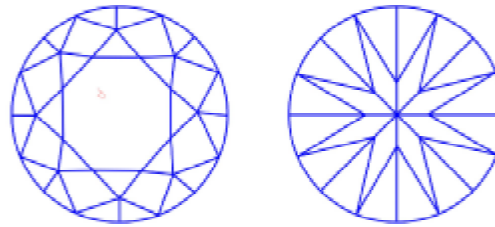
Measurements **10.18 - 10.03 x 6.30 mm**
 Polish **Excellent**
 Symmetry **Excellent**
 Fluorescence **Faint**

COMMENTS

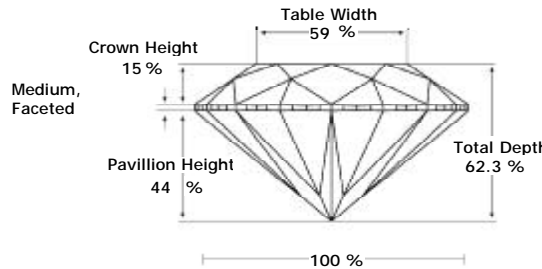
- Report number appears on the girdle.
- "EXCELLENT IDEAL CUT"-The quality of the cut of this diamond achieves Excellence in symmetry and proportions, thus obtaining the optimal dispersion of light and brilliance.

Clarity Representation - Magnification: x10

Internal characteristics shown in red. External characteristics and naturals shown in green. Extra facets shown in black. Symbols indicate nature and location of identified characteristics, not their actual size. Hairline feathers in girdle, minor bearding, and minor details of polish and finish not shown.



PROPORTIONS DIAGRAM



* Profile for representation purposes only

LIGHT PERFORMANCE

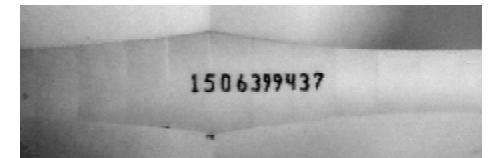
FIRE TRACE
 Light Trace Analysis
 Provides full traceability

B - Brightness F - Fire S - Scintillation

Note: EGL watermark will appear under UV source.

**ISO 9001-2000 / -IQNet-
 INTERNATIONAL CLARITY SCALE INTERNATIONAL COLOR SCALE**

Flawless	Internally Flawless	Colorless	D E F
Very Very Slight Inclusion	VVS1	Near Colorless	* G *
	VVS2		H I J
Very Slight Inclusion	VS1	Tinted White	K L M
	* VS2 *		N O P Q R
Slight Inclusion	SI1	Very Light Yellow	S-Z
	SI2		
	SI3		
Inclusion	I1	Light Yellow	Fancy Yellow
	I2		
	I3		



Online verification service at:
www.eglab.com/bk