

Report Number : EGL1506377635

October 31, 2019



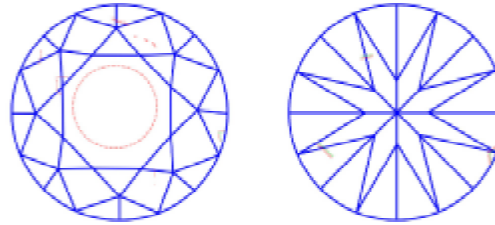
EUROPEAN GEMOLOGICAL LABORATORY

**GRADING RESULTS**

Natural Diamond  
 Shape & Cut Style **Round Brilliant**  
 Carat Weight **0.57 Ct.**  
 Color Grade **F**  
 Clarity Grade **SI2**  
 Cut Grade **Excellent**

**Clarity Representation - Magnification: x10**

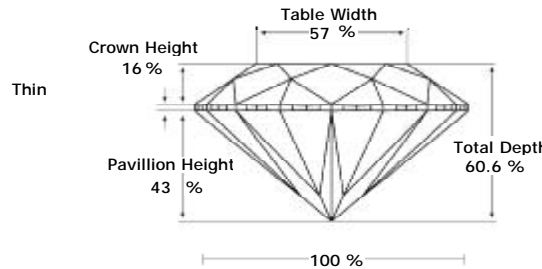
Internal characteristics shown in red. External characteristics and naturals shown in green. Extra facets shown in black. Symbols indicate nature and location of identified characteristics, not their actual size. Hairline feathers in girdle, minor bearding, and minor details of polish and finish not shown.



**ADDITIONAL GRADING INFORMATION**

Measurements **5.42 - 5.37 x 3.27 mm**  
 Polish **Excellent**  
 Symmetry **Excellent**  
 Fluorescence **None**

**PROPORTIONS DIAGRAM**



\* Profile for representation purposes only

**LIGHT PERFORMANCE**

**FIRE TRACE**  
 Light Trace Analysis  
 Precizna analiza svetlosti

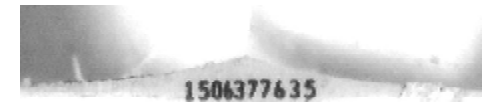
B - Brilliance      F - Fire      S - Scintillation

**ISO 9001-2000 / -IQNet-**

**INTERNATIONAL CLARITY SCALE**

**INTERNATIONAL COLOR SCALE**

Flawless	Internally Flawless	Colorless	D E <b>* F *</b>
Very Very Slight Inclusion	VVS1	Near Colorless	G H I J
	VVS2		Tinted White
Very Slight Inclusion	VS1	Very Light Yellow	
	VS2		Inclusion
Slight Inclusion	SI1	Fancy Yellow	
	<b>* SI2 *</b>		
	SI3		
Inclusion	I1	Fancy Yellow	
	I2		
	I3		



**COMMENTS**

- Report number appears on the girdle.
- "EXCELLENT IDEAL CUT"-The quality of the cut of this diamond achieves Excellence in symmetry and proportions, thus obtaining the optimal dispersion of light and brilliance.

Note: EGL watermark will appear under UV source.

Online verification service at:  
[www.eglab.com/bk](http://www.eglab.com/bk)

