

Report Number : EGL1506375431

October 30, 2019



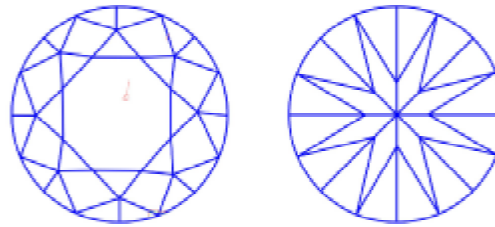
EUROPEAN GEMOLOGICAL LABORATORY

GRADING RESULTS

Natural Diamond
 Shape & Cut Style **Round Brilliant**
 Carat Weight **0.72 Ct.**
 Color Grade **H**
 Clarity Grade **VS1**
 Cut Grade **Excellent**

Clarity Representation - Magnification: x10

Internal characteristics shown in red. External characteristics and naturals shown in green. Extra facets shown in black. Symbols indicate nature and location of identified characteristics, not their actual size. Hairline feathers in girdle, minor bearding, and minor details of polish and finish not shown.



ISO 9001-2000 / -IQNet-

INTERNATIONAL CLARITY SCALE

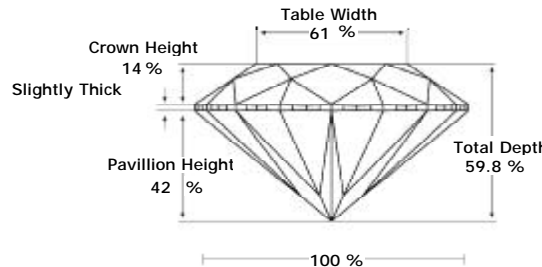
INTERNATIONAL COLOR SCALE

Flawless	Internally Flawless	Colorless	D E F
Very Very Slight Inclusion	VVS1	Near Colorless	G * H *
	VVS2		I J
Very Slight Inclusion	* VS1 *	Tinted White	K L M
	VS2		
Slight Inclusion	S11	Very Light Yellow	N O P Q R
	S12		
	S13		
Inclusion	I1	Light Yellow	S-Z
	I2		
	I3	Fancy Yellow	

ADDITIONAL GRADING INFORMATION

Measurements **5.80 - 5.73 x 3.45 mm**
 Polish **Excellent**
 Symmetry **Excellent**
 Fluorescence **None**

PROPORTIONS DIAGRAM

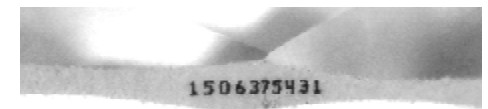


* Profile for representation purposes only

LIGHT PERFORMANCE

FIRE TRACE
 Light Trace Analysis
 Precise light performance

B - Brightness F - Fire S - Scintillation



COMMENTS

- Report number appears on the girdle.
- "EXCELLENT IDEAL CUT"-The quality of the cut of this diamond achieves Excellence in symmetry and proportions, thus obtaining the optimal dispersion of light and brilliance.

Note: EGL watermark will appear under UV source.

Online verification service at:
www.eglab.com/bk

