

Report Number : EGL1506371629

October 29, 2019



EUROPEAN GEMOLOGICAL LABORATORY

**GRADING RESULTS**

Natural Diamond  
 Shape & Cut Style **Round Brilliant**  
 Carat Weight **1.59 Ct.**  
 Color Grade **I**  
 Clarity Grade **VS2**  
 Cut Grade **Very Good**

**ADDITIONAL GRADING INFORMATION**

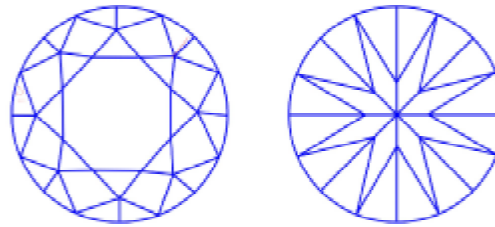
Measurements **7.59 - 7.54 x 4.38 mm**  
 Polish **Excellent**  
 Symmetry **Excellent**  
 Fluorescence **None**

**COMMENTS**

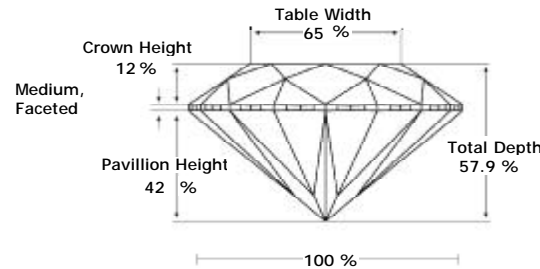
- Report number appears on the girdle.

**Clarity Representation - Magnification: x10**

Internal characteristics shown in red. External characteristics and naturals shown in green. Extra facets shown in black. Symbols indicate nature and location of identified characteristics, not their actual size. Hairline feathers in girdle, minor bearding, and minor details of polish and finish not shown.



**PROPORTIONS DIAGRAM**



\* Profile for representation purposes only

**LIGHT PERFORMANCE**



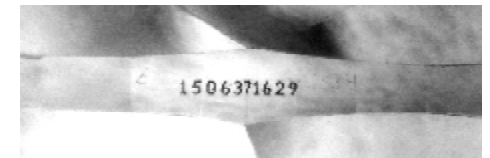
Note: EGL watermark will appear under UV source.

**ISO 9001-2000 / -IQNet-**

**INTERNATIONAL CLARITY SCALE**

**INTERNATIONAL COLOR SCALE**

Flawless	Internally Flawless	Colorless	D E F
Very Very Slight Inclusion	VVS1	Near Colorless	G H <b>* I *</b> J
	VVS2		
Very Slight Inclusion	VS1	Tinted White	K L M
	<b>* VS2 *</b>		
Slight Inclusion	S11	Very Light Yellow	N O P Q R
	S12		
	S13		
Inclusion	I1	Light Yellow	S-Z
	I2		
	I3	Fancy Yellow	



Online verification service at:  
[www.eagle.com.hk](http://www.eagle.com.hk)

