

Report Number : EGL1506316325

September 26, 2019



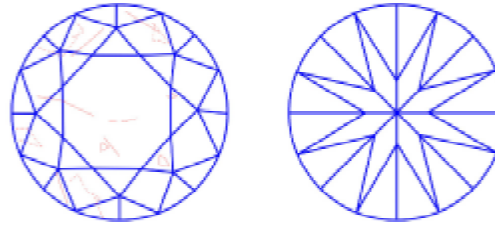
EUROPEAN GEMOLOGICAL LABORATORY

GRADING RESULTS

Natural Diamond
 Shape & Cut Style **Round Brilliant**
 Carat Weight **0.72 Ct.**
 Color Grade **D**
 Clarity Grade **SI2**
 Cut Grade **Excellent**

Clarity Representation - Magnification: x10

Internal characteristics shown in red. External characteristics and naturals shown in green. Extra facets shown in black. Symbols indicate nature and location of identified characteristics, not their actual size. Hairline feathers in girdle, minor bearding, and minor details of polish and finish not shown.



ISO 9001-2000 / -IQNet-

INTERNATIONAL CLARITY SCALE

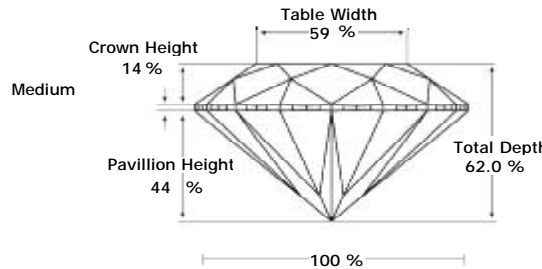
INTERNATIONAL COLOR SCALE

Flawless	Internally Flawless	Colorless	* D * E F
	Very Very Slight Inclusion	VVS1	Near Colorless G H I J
VVS2			
Very Slight Inclusion	VS1	Tinted White K L M	
	VS2		
Slight Inclusion	SI1	Very Light Yellow N O P Q R	
	* SI2 *		
	SI3		
Inclusion	I1	Light Yellow S-Z	
	I2		
	I3	Fancy Yellow	

ADDITIONAL GRADING INFORMATION

Measurements **5.72 - 5.70 x 3.54 mm**
 Polish **Excellent**
 Symmetry **Excellent**
 Fluorescence **None**

PROPORTIONS DIAGRAM



* Profile for representation purposes only

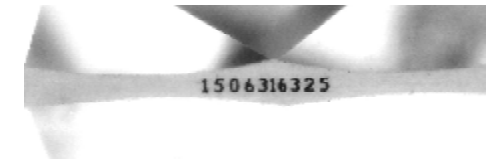
LIGHT PERFORMANCE

FIRE TRACE
 Light Trace Analysis
 Precizna analiza svetlosti

B - Brightness **F - Fire** **S - Scintillation**

COMMENTS

- Report number appears on the girdle.
- "EXCELLENT IDEAL CUT"-The quality of the cut of this diamond achieves Excellence in symmetry and proportions, thus obtaining the optimal dispersion of light and brilliance.



Note: EGL watermark will appear under UV source.

Online verification service at:
www.eglab.com/bk

