

Report Number : EGL1506314020

September 26, 2019



EUROPEAN GEMOLOGICAL LABORATORY

**GRADING RESULTS**

Natural Diamond  
 Shape & Cut Style **Round Brilliant**  
 Carat Weight **1.50 Ct.**  
 Color Grade **E**  
 Clarity Grade **SI 1**  
 Cut Grade **Excellent**

**ADDITIONAL GRADING INFORMATION**

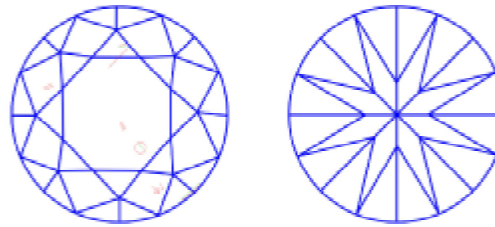
Measurements **7.23 - 7.19 x 4.60 mm**  
 Polish **Excellent**  
 Symmetry **Excellent**  
 Fluorescence **Very Slight**

**COMMENTS**

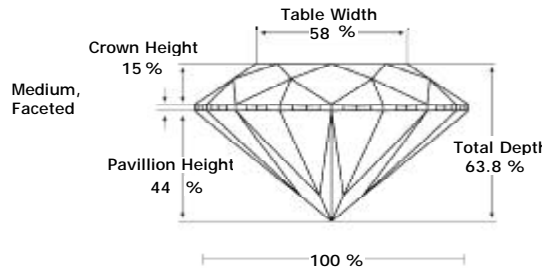
- Report number appears on the girdle.
- "EXCELLENT IDEAL CUT"-The quality of the cut of this diamond achieves Excellence in symmetry and proportions, thus obtaining the optimal dispersion of light and brilliance.

**Clarity Representation - Magnification: x10**

Internal characteristics shown in red. External characteristics and naturals shown in green. Extra facets shown in black. Symbols indicate nature and location of identified characteristics, not their actual size. Hairline feathers in girdle, minor bearding, and minor details of polish and finish not shown.

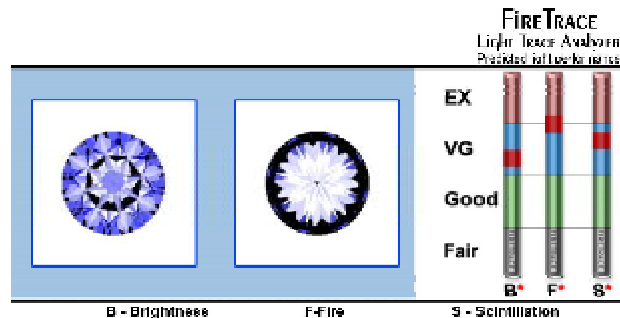


**PROPORTIONS DIAGRAM**



\* Profile for representation purposes only

**LIGHT PERFORMANCE**



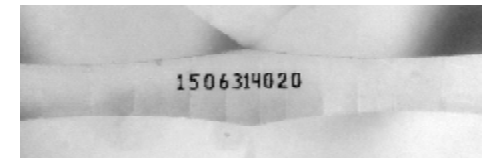
**ISO 9001-2000 / -IQNet-**

**INTERNATIONAL CLARITY SCALE**

Flawless	Internally Flawless
Very Very Slight Inclusion	VVS1 VVS2
Very Slight Inclusion	VS1 VS2
Slight Inclusion	<b>* SI 1 *</b> SI2 SI3
Inclusion	I1 I2 I3

**INTERNATIONAL COLOR SCALE**

Colorless	D <b>* E *</b> F
Near Colorless	G H I J
Tinted White	K L M
Very Light Yellow	N O P Q R
Light Yellow	S-Z
Fancy Yellow	



Note: EGL watermark will appear under UV source.

Online verification service at:  
[www.eglab.com/bk](http://www.eglab.com/bk)

