

Report Number : EGL1506297737

September 16, 2019



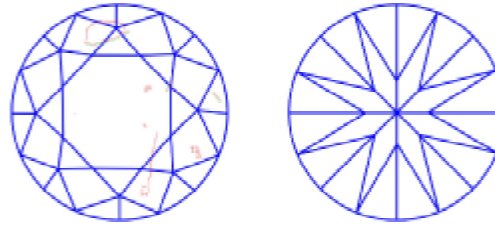
EUROPEAN GEMOLOGICAL LABORATORY

GRADING RESULTS

Natural Diamond
 Shape & Cut Style **Round Brilliant**
 Carat Weight **1.05 Ct.**
 Color Grade **G**
 Clarity Grade **SI2**
 Cut Grade **Excellent**

Clarity Representation - Magnification: x10

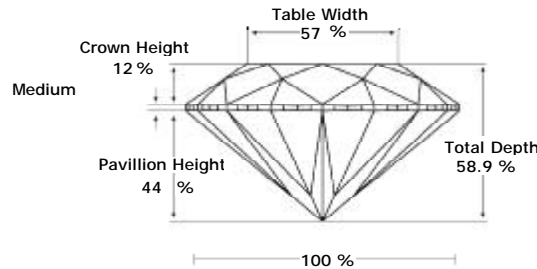
Internal characteristics shown in red. External characteristics and naturals shown in green. Extra facets shown in black. Symbols indicate nature and location of identified characteristics, not their actual size. Hairline feathers in girdle, minor bearding, and minor details of polish and finish not shown.



ADDITIONAL GRADING INFORMATION

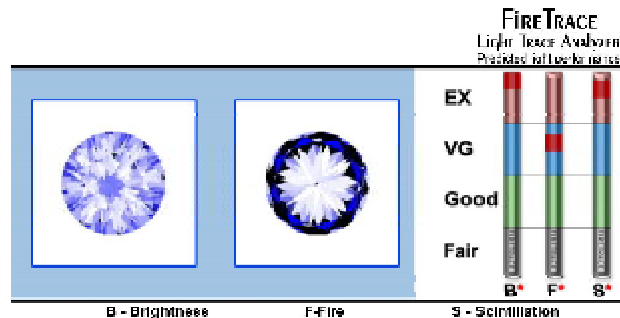
Measurements **6.72 - 6.62 x 3.93 mm**
 Polish **Excellent**
 Symmetry **Excellent**
 Fluorescence **Faint**

PROPORTIONS DIAGRAM



* Profile for representation purposes only

LIGHT PERFORMANCE

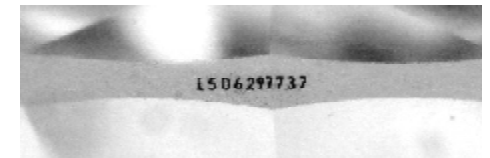


ISO 9001-2000 / -IQNet-

INTERNATIONAL CLARITY SCALE

INTERNATIONAL COLOR SCALE

| | | | | |
|----------------------------|---------------------|----------------|-------------------|-----------------------|
| Flawless | Internally Flawless | Colorless | D E F | |
| Very Very Slight Inclusion | VVS1 | Near Colorless | * G * | |
| | VVS2 | | H I J | |
| Very Slight Inclusion | VS1 | Tinted White | K L M | |
| | VS2 | | Very Light Yellow | N O P Q R |
| Slight Inclusion | SI1 | Light Yellow | | S-Z |
| | * SI2 * | | | |
| | SI3 | | | |
| Inclusion | I1 | | | |
| | I2 | | | |
| | I3 | | | |



COMMENTS

- Report number appears on the girdle.

Note: EGL watermark will appear under UV source.

Online verification service at:
www.eglab.com/bk

