

Report Number : EGL1506267027

September 09, 2019



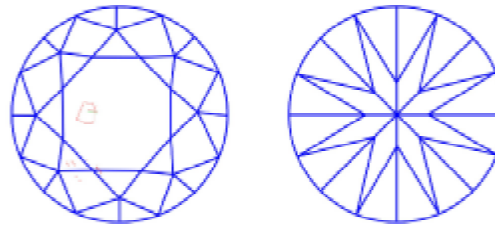
EUROPEAN GEMOLOGICAL LABORATORY

GRADING RESULTS

Natural Diamond
 Shape & Cut Style **Round Brilliant**
 Carat Weight **0.70 Ct.**
 Color Grade **E**
 Clarity Grade **SI2**
 Cut Grade **Excellent**

Clarity Representation - Magnification: x10

Internal characteristics shown in red. External characteristics and naturals shown in green. Extra facets shown in black. Symbols indicate nature and location of identified characteristics, not their actual size. Hairline feathers in girdle, minor bearding, and minor details of polish and finish not shown.



ISO 9001-2000 / -IQNet-

INTERNATIONAL CLARITY SCALE

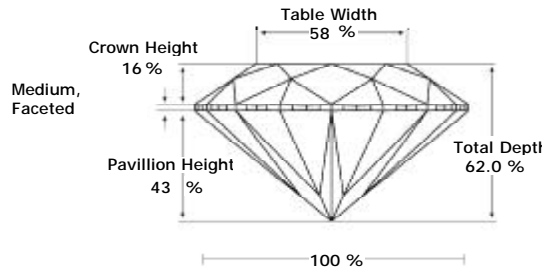
INTERNATIONAL COLOR SCALE

| | | | | |
|----------------------------|---------------------|-------------------|------------------|-----------------------|
| Flawless | Internally Flawless | Colorless | D * E * F | |
| | VVS1 | Near Colorless | G H I J | |
| Very Very Slight Inclusion | VVS2 | | Tinted White | K L M |
| | VS1 | Very Light Yellow | | N O P Q R |
| Very Slight Inclusion | VS2 | | Light Yellow | S-Z |
| | Slight Inclusion | | | |
| * SI2 * | | | | |
| Inclusion | SI3 | | | |
| | I1 | | | |
| | I2 | | | |
| | I3 | | | |

ADDITIONAL GRADING INFORMATION

Measurements **5.67 - 5.65 x 3.51 mm**
 Polish **Excellent**
 Symmetry **Excellent**
 Fluorescence **Slight**

PROPORTIONS DIAGRAM

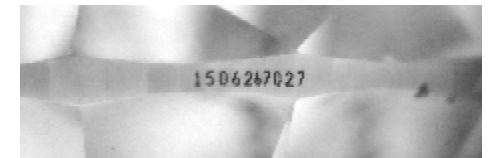


* Profile for representation purposes only

LIGHT PERFORMANCE

FIRE TRACE
 Light Trace Analysis
 Precise Brilliance

B - Brightness F - Fire S - Scintillation



COMMENTS

- Report number appears on the girdle.
- "EXCELLENT IDEAL CUT"-The quality of the cut of this diamond achieves Excellence in symmetry and proportions, thus obtaining the optimal dispersion of light and brilliance.

Note: EGL watermark will appear under UV source.

Online verification service at:
www.eglab.com/bk

