

Report Number : EGL1506237832

August 27, 2019



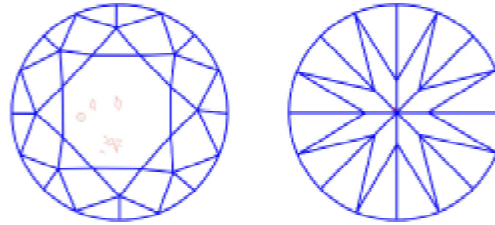
EUROPEAN GEMOLOGICAL LABORATORY

GRADING RESULTS

Natural Diamond
 Shape & Cut Style **Round Brilliant**
 Carat Weight **1.05 Ct.**
 Color Grade **D**
 Clarity Grade **SI 1**
 Cut Grade **Excellent**

Clarity Representation - Magnification: x10

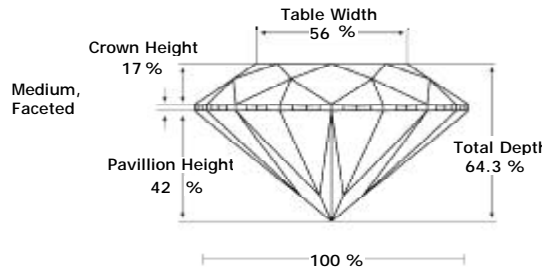
Internal characteristics shown in red. External characteristics and naturals shown in green. Extra facets shown in black. Symbols indicate nature and location of identified characteristics, not their actual size. Hairline feathers in girdle, minor bearding, and minor details of polish and finish not shown.



ADDITIONAL GRADING INFORMATION

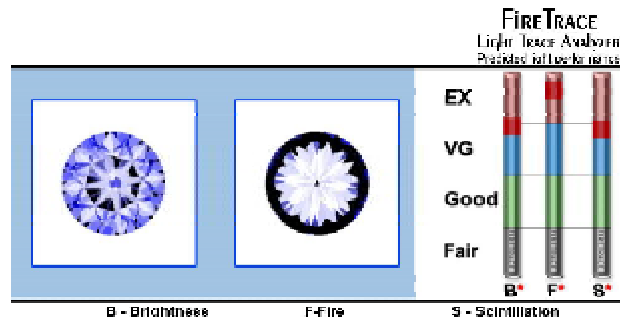
Measurements **6.37 - 6.32 x 4.08 mm**
 Polish **Excellent**
 Symmetry **Excellent**
 Fluorescence **None**

PROPORTIONS DIAGRAM



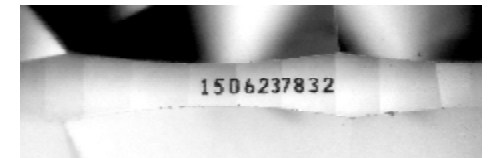
* Profile for representation purposes only

LIGHT PERFORMANCE



**ISO 9001-2000 / -IQNet-
 INTERNATIONAL CLARITY SCALE INTERNATIONAL COLOR SCALE**

Flawless	Internally Flawless	Colorless	* D * E F
Very Very Slight Inclusion	VVS1	Near Colorless	G H I J
	VVS2		K L M
Very Slight Inclusion	VS1	Tinted White	N O P Q R
	VS2		Light Yellow
Slight Inclusion	* SI 1 *	Fancy Yellow	
	SI2		
	SI3		
Inclusion	I1	Fancy Yellow	
	I2		
	I3		



COMMENTS

- Report number appears on the girdle.
- "EXCELLENT IDEAL CUT"-The quality of the cut of this diamond achieves Excellence in symmetry and proportions, thus obtaining the optimal dispersion of light and brilliance.

Note: EGL watermark will appear under UV source.

Online verification service at:
www.eglab.com/bk

