

Report Number : EGL1506236932

August 27, 2019



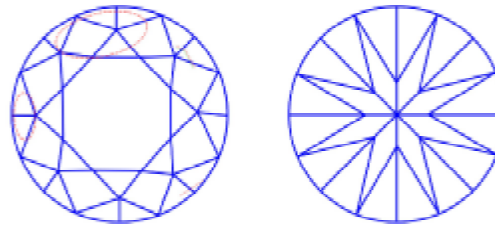
EUROPEAN GEMOLOGICAL LABORATORY

GRADING RESULTS

Natural Diamond
 Shape & Cut Style **Round Brilliant**
 Carat Weight **0.52 Ct.**
 Color Grade **D**
 Clarity Grade **VS1**
 Cut Grade **Excellent**

Clarity Representation - Magnification: x10

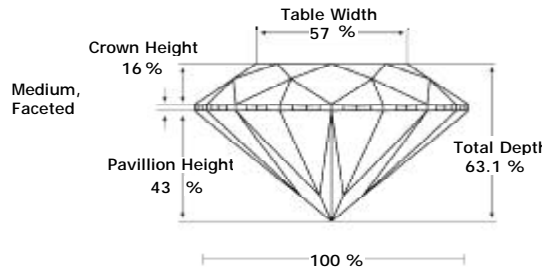
Internal characteristics shown in red. External characteristics and naturals shown in green. Extra facets shown in black. Symbols indicate nature and location of identified characteristics, not their actual size. Hairline feathers in girdle, minor bearding, and minor details of polish and finish not shown.



ADDITIONAL GRADING INFORMATION

Measurements **5.11 - 5.07 x 3.21 mm**
 Polish **Excellent**
 Symmetry **Excellent**
 Fluorescence **None**

PROPORTIONS DIAGRAM



* Profile for representation purposes only

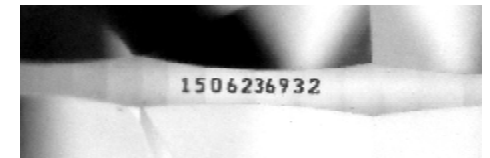
LIGHT PERFORMANCE

FIRE TRACE
 Light Trace Analysis
 Provides full traceability

B - Brightness F - Fire S - Scintillation

**ISO 9001-2000 / -IQNet-
 INTERNATIONAL CLARITY SCALE INTERNATIONAL COLOR SCALE**

Flawless	Internally Flawless	Colorless	* D * E F
Very Very Slight Inclusion	VVS1	Near Colorless	G H I J
	VVS2		Tinted White
Very Slight Inclusion	* VS1 *	Very Light Yellow	
	VS2		Light Yellow
Slight Inclusion	SI1		
	SI2		
	SI3		
Inclusion	I1		
	I2		
	I3		



COMMENTS

- Report number appears on the girdle.
- "EXCELLENT IDEAL CUT"-The quality of the cut of this diamond achieves Excellence in symmetry and proportions, thus obtaining the optimal dispersion of light and brilliance.

Note: EGL watermark will appear under UV source.

Online verification service at:
www.eglab.com/bk

