

Report Number : EGL1506206626

August 07, 2019



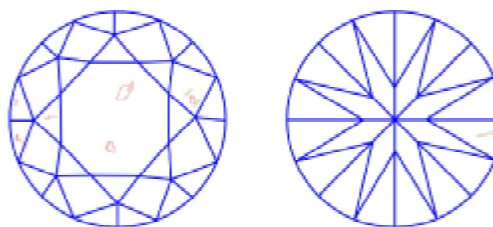
EUROPEAN GEMOLOGICAL LABORATORY

**GRADING RESULTS**

Natural Diamond  
 Shape & Cut Style **Round Brilliant**  
 Carat Weight **0.70 Ct.**  
 Color Grade **F**  
 Clarity Grade **SI2**  
 Cut Grade **Very Good**

**Clarity Representation - Magnification: x10**

Internal characteristics shown in red. External characteristics and naturals shown in green. Extra facets shown in black. Symbols indicate nature and location of identified characteristics, not their actual size. Hairline feathers in girdle, minor bearding, and minor details of polish and finish not shown.



**ISO 9001-2000 / -IQNet-**

**INTERNATIONAL CLARITY SCALE**

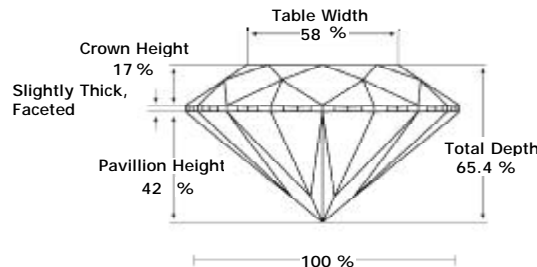
**INTERNATIONAL COLOR SCALE**

Flawless	Internally Flawless	Colorless	D E * F *	
Very Very Slight Inclusion	VVS1	Near Colorless	G H I J	
	VVS2		Tinted White	K L M
Very Slight Inclusion	VS1	Very Light Yellow		N O P Q R
	VS2		Light Yellow	S-Z
Slight Inclusion	SI1	Fancy Yellow		
	* SI2 *			
	SI3			
Inclusion	I1			
	I2			
	I3			

**ADDITIONAL GRADING INFORMATION**

Measurements **5.51 - 5.38 x 3.56 mm**  
 Polish **Very Good**  
 Symmetry **Very Good**  
 Fluorescence **None**

**PROPORTIONS DIAGRAM**

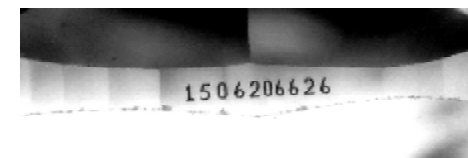


\* Profile for representation purposes only

**LIGHT PERFORMANCE**

**FIRE TRACE**  
 Light Trace Analysis  
 Provides full traceability

B - Brightness      F - Fire      S - Scintillation



**COMMENTS**

- Report number appears on the girdle.

Note: EGL watermark will appear under UV source.

Online verification service at:  
[www.eglab.com/bk](http://www.eglab.com/bk)

