

Report Number : EGL1506181123

July 29, 2019



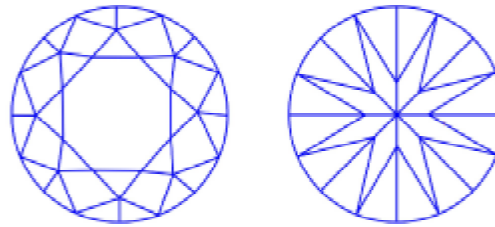
EUROPEAN GEMOLOGICAL LABORATORY

**GRADING RESULTS**

Natural Diamond  
 Shape & Cut Style **Round Brilliant**  
 Carat Weight **0.54 Ct.**  
 Color Grade **G**  
 Clarity Grade **VVS2**  
 Cut Grade **Excellent**

**Clarity Representation - Magnification: x10**

Internal characteristics shown in red. External characteristics and naturals shown in green. Extra facets shown in black. Symbols indicate nature and location of identified characteristics, not their actual size. Hairline feathers in girdle, minor bearding, and minor details of polish and finish not shown.



**ISO 9001-2000 / -IQNet-**

**INTERNATIONAL CLARITY SCALE**

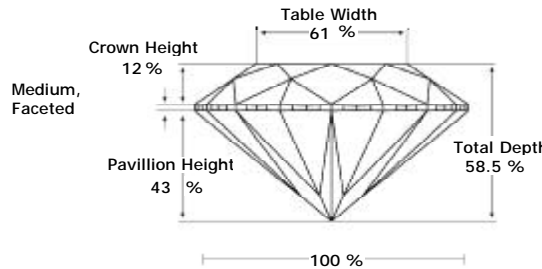
**INTERNATIONAL COLOR SCALE**

|                            |                     |                   |                       |
|----------------------------|---------------------|-------------------|-----------------------|
| Flawless                   | Internally Flawless | Colorless         | D<br>E<br>F           |
| Very Very Slight Inclusion | VVS1                | Near Colorless    | * G *                 |
|                            | * VVS2 *            |                   | H<br>I<br>J           |
| Very Slight Inclusion      | VS1                 | Tinted White      | K<br>L<br>M           |
|                            | VS2                 |                   |                       |
| Slight Inclusion           | S11                 | Very Light Yellow | N<br>O<br>P<br>Q<br>R |
|                            | S12                 |                   |                       |
|                            | S13                 |                   |                       |
| Inclusion                  | I1                  | Light Yellow      | S-Z                   |
|                            | I2                  |                   |                       |
|                            | I3                  | Fancy Yellow      |                       |

**ADDITIONAL GRADING INFORMATION**

Measurements **5.37 - 5.33 x 3.13 mm**  
 Polish **Excellent**  
 Symmetry **Excellent**  
 Fluorescence **None**

**PROPORTIONS DIAGRAM**

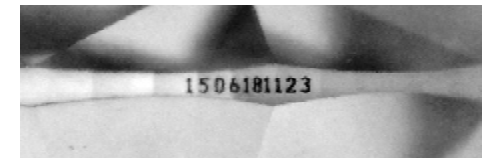


\* Profile for representation purposes only

**LIGHT PERFORMANCE**

**FIRE TRACE**  
 Light Trace Analysis  
 Prescribed for Gemstones

B - Brightness      F - Fire      S - Scintillation



**COMMENTS**

- Report number appears on the girdle.
- "EXCELLENT IDEAL CUT"-The quality of the cut of this diamond achieves Excellence in symmetry and proportions, thus obtaining the optimal dispersion of light and brilliance.

Note: EGL watermark will appear under UV source.

Online verification service at:  
[www.eglab.com/bk](http://www.eglab.com/bk)

