

Report Number : EGL1506181022

July 29, 2019



EUROPEAN GEMOLOGICAL LABORATORY

**GRADING RESULTS**

Natural Diamond  
 Shape & Cut Style **Round Brilliant**  
 Carat Weight **0.54 Ct.**  
 Color Grade **G**  
 Clarity Grade **VVS2**  
 Cut Grade **Excellent**

**ADDITIONAL GRADING INFORMATION**

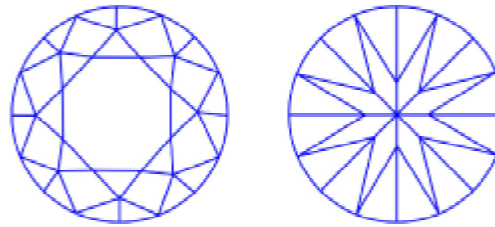
Measurements **5.13 - 5.11 x 3.21 mm**  
 Polish **Excellent**  
 Symmetry **Excellent**  
 Fluorescence **None**

**COMMENTS**

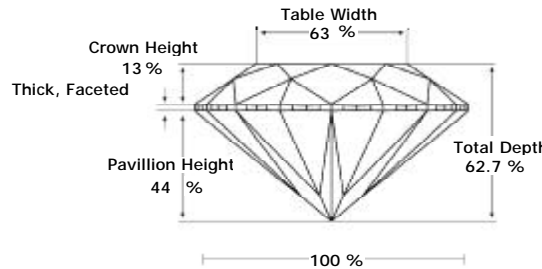
- Report number appears on the girdle.
- "EXCELLENT IDEAL CUT"-The quality of the cut of this diamond achieves Excellence in symmetry and proportions, thus obtaining the optimal dispersion of light and brilliance.

**Clarity Representation - Magnification: x10**

Internal characteristics shown in red. External characteristics and naturals shown in green. Extra facets shown in black. Symbols indicate nature and location of identified characteristics, not their actual size. Hairline feathers in girdle, minor bearding, and minor details of polish and finish not shown.

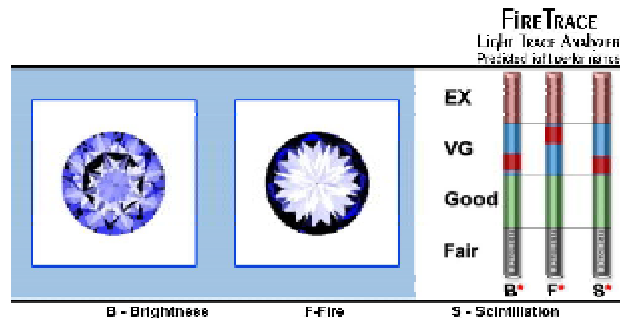


**PROPORTIONS DIAGRAM**



\* Profile for representation purposes only

**LIGHT PERFORMANCE**

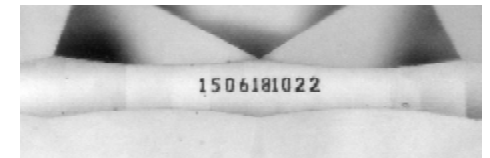


**ISO 9001-2000 / -IQNet-**

**INTERNATIONAL CLARITY SCALE**

**INTERNATIONAL COLOR SCALE**

Flawless	Internally Flawless	Colorless	D E F	
Very Very Slight Inclusion	VVS1	Near Colorless	* G *	
	* VVS2 *		H I J	
Very Slight Inclusion	VS1	Tinted White	K L M	
	VS2		Very Light Yellow	N O P Q R
Slight Inclusion	S11	Light Yellow		S-Z
	S12			Fancy Yellow
	S13			
Inclusion	I1			
	I2			
	I3			



Note: EGL watermark will appear under UV source.

Online verification service at:  
[www.eglab.com/bk](http://www.eglab.com/bk)

