

Report Number : EGL1506135021

July 04, 2019



EUROPEAN GEMOLOGICAL LABORATORY

**GRADING RESULTS**

Natural Diamond  
 Shape & Cut Style **Round Brilliant**  
 Carat Weight **1.04 Ct.**  
 Color Grade **G**  
 Clarity Grade **VS1**  
 Cut Grade **Excellent**

**ADDITIONAL GRADING INFORMATION**

Measurements **6.51 - 6.44 x 4.05 mm**  
 Polish **Excellent**  
 Symmetry **Excellent**  
 Fluorescence **Slight**

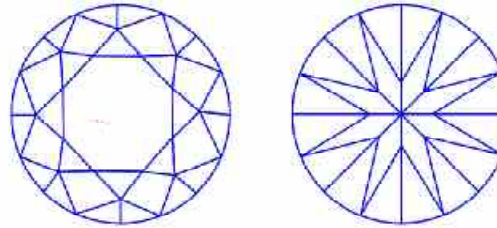
**COMMENTS**

- Report number appears on the girdle.
- "EXCELLENT IDEAL CUT"-The quality of the cut of this diamond achieves Excellence in symmetry and proportions, thus obtaining the optimal dispersion of light and brilliance.

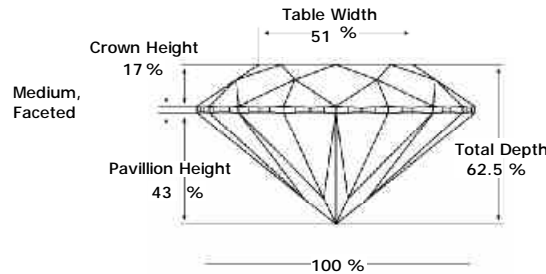
**Clarity Representation - Magnification: x10**

Internal characteristics shown in red. External characteristics and naturals shown in green. Extra facets shown in black. Symbols indicate nature and

in girdle, minor bearding, and minor details of polish and finish not shown.

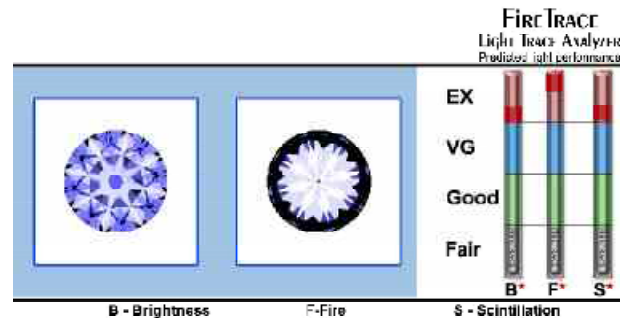


**PROPORTIONS DIAGRAM**



\* Profile for representation purposes only

**LIGHT PERFORMANCE**



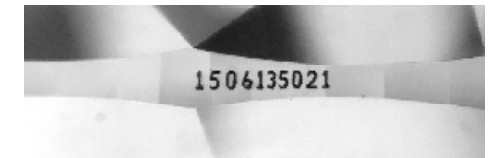
**ISO 9001-2000 / -IQNet-**

**INTERNATIONAL CLARITY SCALE**

**INTERNATIONAL COLOR SCALE**

Flawless	Internally Flawless
Very Very Slight Inclusion	VVS1
	VVS2
Very Slight Inclusion	<b>* VS1 *</b>
	VS2
Slight Inclusion	S11
	S12
	S13
Inclusion	I1
	I2
	I3

Colorless	D E F
Near Colorless	<b>* G *</b>
	H I J
	K L M
Very Light Yellow	N O P Q R
Light Yellow	S-Z
Fancy Yellow	



Note: EGL watermark will appear under UV source.

Online verification service at:  
[www.eglhk.com.hk](http://www.eglhk.com.hk)

