

Report Number : EGL1505371527

June 14, 2018



EUROPEAN GEMOLOGICAL LABORATORY

GRADING RESULTS

Natural Diamond
 Shape & Cut Style **Round Brilliant**
 Carat Weight **0.71 Ct.**
 Color Grade **E**
 Clarity Grade **VS2**
 Cut Grade **Very Good**

ADDITIONAL GRADING INFORMATION

Measurements **5.52 - 5.49 x 3.58 mm**
 Polish **Very Good**
 Symmetry **Very Good**
 Fluorescence **Moderate**

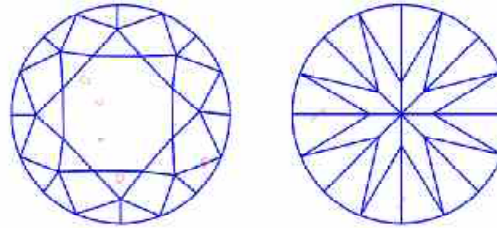
COMMENTS

- Report number appears on the girdle.

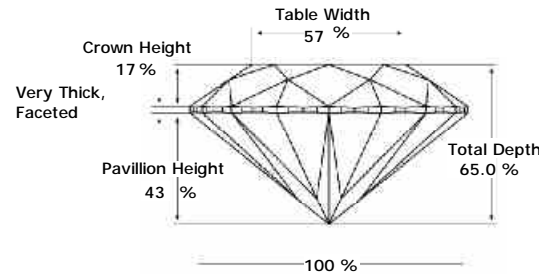
Clarity Representation - Magnification: x10

Internal characteristics shown in red. External characteristics and naturals shown in green. Extra facets shown in black. Symbols indicate nature and

in girdle, minor bearding, and minor details of polish and finish not shown.



PROPORTIONS DIAGRAM



* Profile for representation purposes only

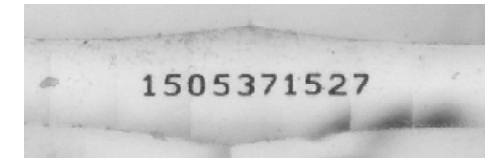
LIGHT PERFORMANCE

FIRE TRACE
 Light Trace Analyzer
 Predicts light performance

B - Brightness **F - Fire** **S - Scintillation**

**ISO 9001-2000 / -IQNet-
 INTERNATIONAL CLARITY SCALE INTERNATIONAL COLOR SCALE**

Flawless	Internally Flawless	Colorless	D * E * F	
Very Very Slight Inclusion	VVS1	Near Colorless	G H I J	
	VVS2		Tinted White	K L M
Very Slight Inclusion	VS1	Slight Inclusion		N O P Q R
	* VS2 *		Inclusion	I1 I2 I3
	I1			Light Yellow
I2	Fancy Yellow			
I3				



Note: EGL watermark will appear under UV source.

Online verification service at:
www.eglhk.com.hk

