

Report Number : EGL1505332524

May 30, 2018



EUROPEAN GEMOLOGICAL LABORATORY

GRADING RESULTS

Natural Diamond
 Shape & Cut Style **Round Brilliant**
 Carat Weight **1.03 Ct.**
 Color Grade **E**
 Clarity Grade **SI 1**
 Cut Grade **Excellent**

ADDITIONAL GRADING INFORMATION

Measurements **6.33 - 6.29 x 4.05 mm**
 Polish **Excellent**
 Symmetry **Excellent**
 Fluorescence **Faint**

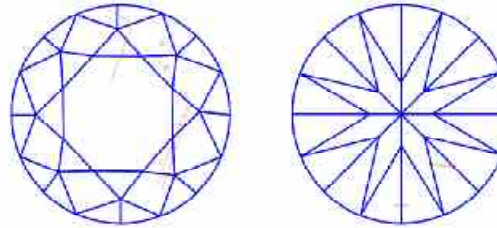
COMMENTS

- Report number appears on the girdle.
- "EXCELLENT IDEAL CUT"-The quality of the cut of this diamond achieves Excellence in symmetry and proportions, thus obtaining the optimal dispersion of light and brilliance.

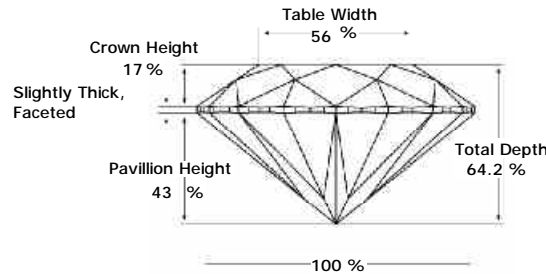
Clarity Representation - Magnification: x10

Internal characteristics shown in red. External characteristics and naturals shown in green. Extra facets shown in black. Symbols indicate nature and

in girdle, minor bearding, and minor details of polish and finish not shown.



PROPORTIONS DIAGRAM



* Profile for representation purposes only

LIGHT PERFORMANCE

FIRE TRACE
 Light Trace Analyzer
 Predicts light performance

B - Brightness **F - Fire** **S - Scintillation**

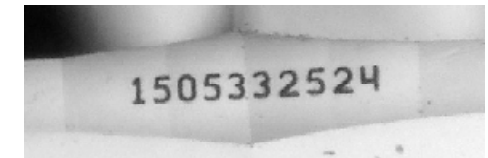
ISO 9001-2000 / -IQNet-

INTERNATIONAL CLARITY SCALE

INTERNATIONAL COLOR SCALE

Flawless	Internally Flawless
Very Very Slight Inclusion	VVS1 VVS2
Very Slight Inclusion	VS1 VS2
Slight Inclusion	* SI 1 * SI2 SI3
Inclusion	I1 I2 I3

Colorless	D * E * F
Near Colorless	G H I J
Tinted White	K L M
Very Light Yellow	N O P Q R
Light Yellow	S-Z
Fancy Yellow	



Note: EGL watermark will appear under UV source.

Online verification service at:
www.eglhk.com.hk

