

Report Number : EGL1505240522

May 02, 2018



EUROPEAN GEMOLOGICAL LABORATORY

GRADING RESULTS

Natural Diamond
 Shape & Cut Style **Round Brilliant**
 Carat Weight **0.54 Ct.**
 Color Grade **F**
 Clarity Grade **SI2**
 Cut Grade **Excellent**

ADDITIONAL GRADING INFORMATION

Measurements **5.22 - 5.17 x 3.20 mm**
 Polish **Excellent**
 Symmetry **Excellent**
 Fluorescence **Slight**

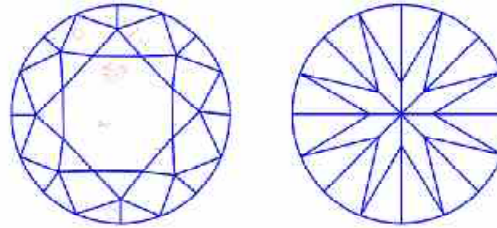
COMMENTS

- Report number appears on the girdle.
- "EXCELLENT IDEAL CUT"-The quality of the cut of this diamond achieves Excellence in symmetry and proportions, thus obtaining the optimal dispersion of light and brilliance.

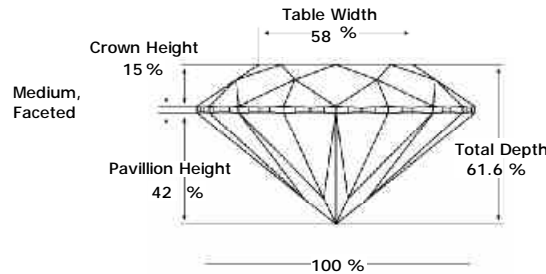
Clarity Representation - Magnification: x10

Internal characteristics shown in red. External characteristics and naturals shown in green. Extra facets shown in black. Symbols indicate nature and

in girdle, minor bearding, and minor details of polish and finish not shown.



PROPORTIONS DIAGRAM



* Profile for representation purposes only

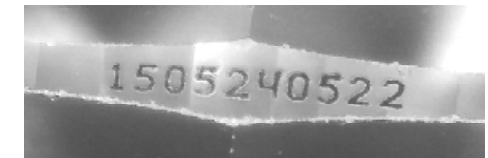
LIGHT PERFORMANCE

FIRE TRACE
 Light Trace Analyzer
 Predicts light performance

B - Brightness **F - Fire** **S - Scintillation**

**ISO 9001-2000 / -IQNet-
 INTERNATIONAL CLARITY SCALE INTERNATIONAL COLOR SCALE**

Flawless	Internally Flawless	Colorless	D E * F *
Very Very Slight Inclusion	VVS1	Near Colorless	G H I J
	VVS2		Tinted White
Very Slight Inclusion	VS1	Slight Inclusion	
	VS2		Inclusion
* SI2 *	I2		
Slight Inclusion	SI1	Inclusion	I3
	SI3		
Inclusion	I1	Light Yellow	S-Z
	I2		
Inclusion	I3	Fancy Yellow	



Note: EGL watermark will appear under UV source.

Online verification service at:
www.eglhk.com.hk

