

Report Number : EGL1505074729

February 27, 2018



EUROPEAN GEMOLOGICAL LABORATORY

**GRADING RESULTS**

Natural Diamond  
 Shape & Cut Style **Round Brilliant**  
 Carat Weight **0.51 Ct.**  
 Color Grade **E**  
 Clarity Grade **SI2**  
 Cut Grade **Excellent**

**ADDITIONAL GRADING INFORMATION**

Measurements **5.25 - 5.15 x 3.09 mm**  
 Polish **Excellent**  
 Symmetry **Excellent**  
 Fluorescence **Faint**

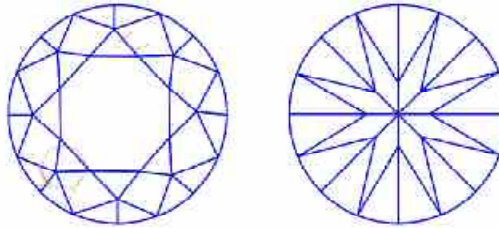
**COMMENTS**

- Report number appears on the girdle.
- "EXCELLENT IDEAL CUT"-The quality of the cut of this diamond achieves Excellence in symmetry and proportions, thus obtaining the optimal dispersion of light and brilliance.
- KM

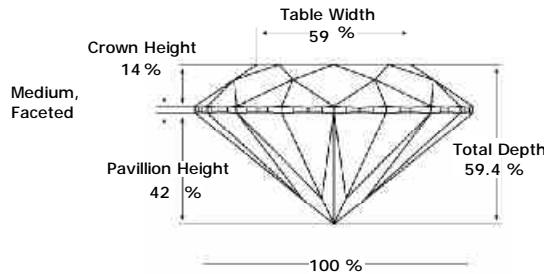
**Clarity Representation - Magnification: x10**

Internal characteristics shown in red. External characteristics and naturals shown in green. Extra facets shown in black. Symbols indicate nature and

in girdle, minor bearding, and minor details of polish and finish not shown.

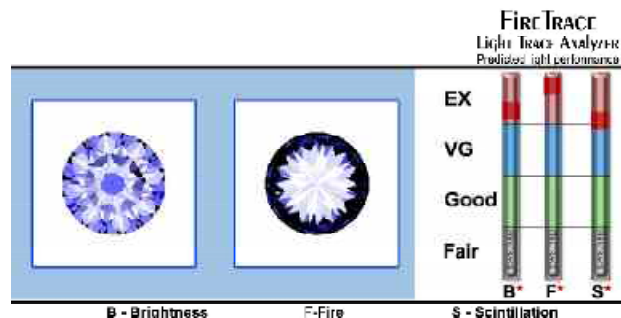


**PROPORTIONS DIAGRAM**



\* Profile for representation purposes only

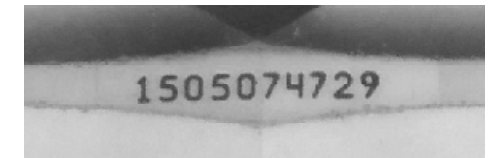
**LIGHT PERFORMANCE**



Note: EGL watermark will appear under UV source.

**ISO 9001-2000 / -IQNet-  
 INTERNATIONAL CLARITY SCALE      INTERNATIONAL COLOR SCALE**

Flawless	Internally Flawless	Colorless	D * E * F	
Very Very Slight Inclusion	VVS1	Near Colorless	G H I J	
	VVS2		Tinted White	K L M
Very Slight Inclusion	VS1	Slight Inclusion		N O P Q R
	VS2		* SI2 *	Light Yellow
Inclusion	I1	Fancy Yellow		
	I2			
	I3			



Online verification service at:  
[www.eglhk.com.hk](http://www.eglhk.com.hk)

