

Report Number : EGL1504887841

December 04, 2017



EUROPEAN GEMOLOGICAL LABORATORY

GRADING RESULTS

Natural Diamond
 Shape & Cut Style **Round Brilliant**
 Carat Weight **0.72 Ct.**
 Color Grade **D**
 Clarity Grade **SI2**
 Cut Grade **Excellent**

ADDITIONAL GRADING INFORMATION

Measurements **5.73 - 5.70 x 3.49 mm**
 Polish **Excellent**
 Symmetry **Excellent**
 Fluorescence **None**

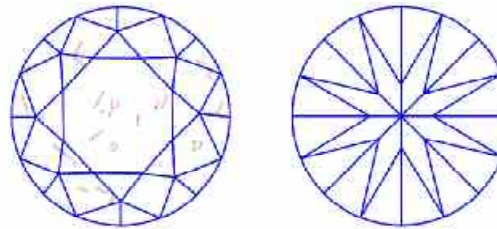
COMMENTS

- Report number appears on the girdle.
- "EXCELLENT IDEAL CUT"-The quality of the cut of this diamond achieves Excellence in symmetry and proportions, thus obtaining the optimal dispersion of light and brilliance.

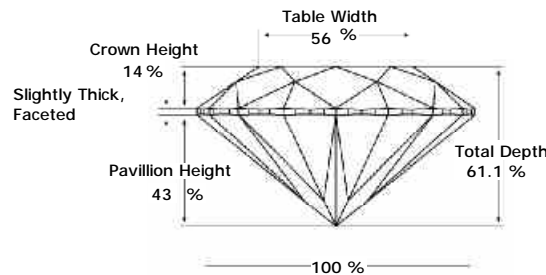
Clarity Representation - Magnification: x10

Internal characteristics shown in red. External characteristics and naturals shown in green. Extra facets shown in black. Symbols indicate nature and

in girdle, minor bearding, and minor details of polish and finish not shown.

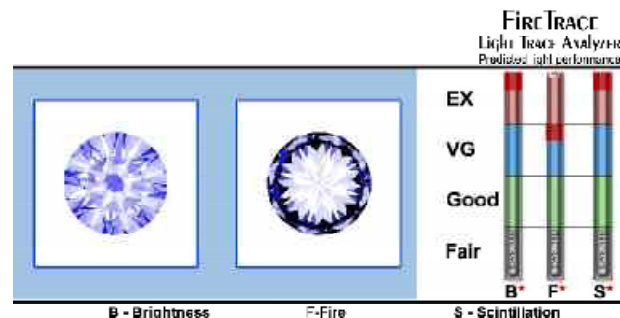


PROPORTIONS DIAGRAM



* Profile for representation purposes only

LIGHT PERFORMANCE



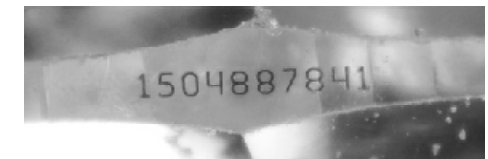
ISO 9001-2000 / -IQNet-

INTERNATIONAL CLARITY SCALE

INTERNATIONAL COLOR SCALE

Flawless	Internally Flawless
Very Very Slight Inclusion	VVS1
	VVS2
Very Slight Inclusion	VS1
	VS2
Slight Inclusion	SI1
	* SI2 *
	SI3
Inclusion	I1
	I2
	I3

Colorless	* D * E F
Near Colorless	G H I J
	K L M
Very Light Yellow	N O P Q R
Light Yellow	S-Z
Fancy Yellow	



Note: EGL watermark will appear under UV source.

Online verification service at:
www.eglhk.com.hk

