

Report Number : EGL1504887033

December 04, 2017



EUROPEAN GEMOLOGICAL LABORATORY

**GRADING RESULTS**

Natural Diamond  
 Shape & Cut Style **Round Brilliant**  
 Carat Weight **0.70 Ct.**  
 Color Grade **G**  
 Clarity Grade **SI 1**  
 Cut Grade **Very Good**

**ADDITIONAL GRADING INFORMATION**

Measurements **5.50 - 5.43 x 3.59 mm**  
 Polish **Very Good**  
 Symmetry **Very Good**  
 Fluorescence **None**

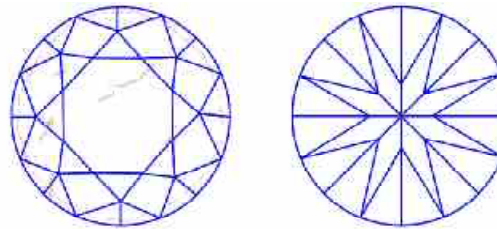
**COMMENTS**

- Report number appears on the girdle.

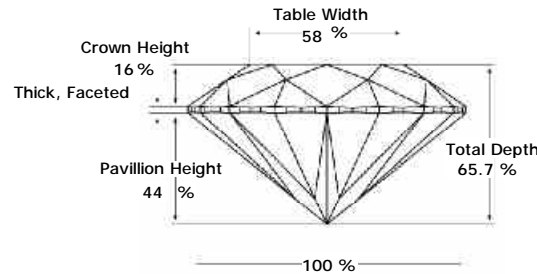
**Clarity Representation - Magnification: x10**

Internal characteristics shown in red. External characteristics and naturals shown in green. Extra facets shown in black. Symbols indicate nature and

in girdle, minor bearding, and minor details of polish and finish not shown.



**PROPORTIONS DIAGRAM**



\* Profile for representation purposes only

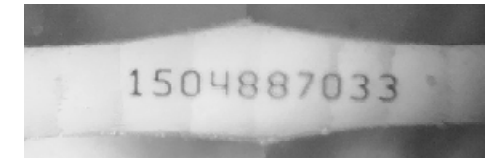
**LIGHT PERFORMANCE**

**FIRE TRACE**  
 Light Trace Analyzer  
 Predicts light performance

**B - Brightness**      **F - Fire**      **S - Scintillation**

**ISO 9001-2000 / -IQNet-  
 INTERNATIONAL CLARITY SCALE      INTERNATIONAL COLOR SCALE**

Flawless	Internally Flawless	Colorless	D E F
Very Very Slight Inclusion	VVS1	Near Colorless	* G *
	VVS2		H I J
Very Slight Inclusion	VS1	Tinted White	K L M
	VS2		
Slight Inclusion	* SI 1 *	Very Light Yellow	N O P Q R
	SI2		
	SI3		
Inclusion	I1	Light Yellow	S-Z
	I2		
	I3		
		Fancy Yellow	



Note: EGL watermark will appear under UV source.

Online verification service at:  
[www.eglhk.com.hk](http://www.eglhk.com.hk)

