

Report Number : EGL1504676736

September 11, 2017



EUROPEAN GEMOLOGICAL LABORATORY

GRADING RESULTS

Natural Diamond
Shape & Cut Style Round Brilliant
Carat Weight 0.71 Ct.
Color Grade D
Clarity Grade SI2
Cut Grade Excellent

ADDITIONAL GRADING INFORMATION

Measurements 5.66 - 5.60 x 3.51 mm
Polish Excellent
Symmetry Excellent
Fluorescence None

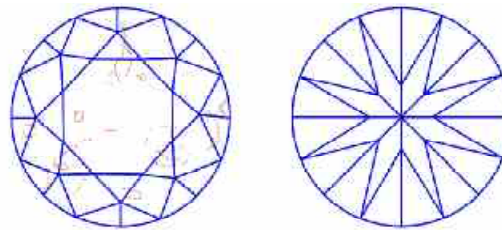
COMMENTS

- Report number appears on the girdle.
- "EXCELLENT IDEAL CUT"-The quality of the cut of this diamond achieves Excellence in symmetry and proportions, thus obtaining the optimal dispersion of light and brilliance.

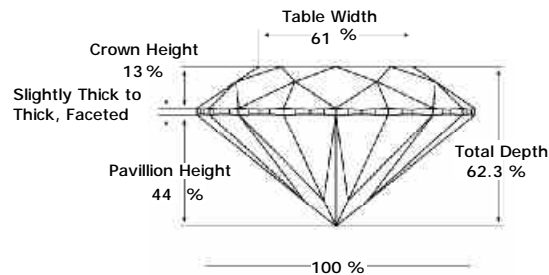
Clarity Representation - Magnification: x10

Internal characteristics shown in red. External characteristics and naturals shown in green. Extra facets shown in black. Symbols indicate nature and

in girdle, minor bearding, and minor details of polish and finish not shown.

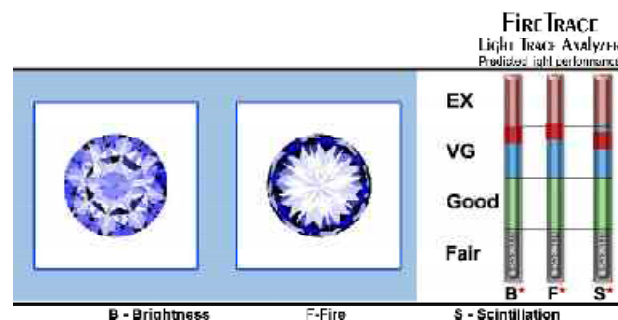


PROPORTIONS DIAGRAM



* Profile for representation purposes only

LIGHT PERFORMANCE



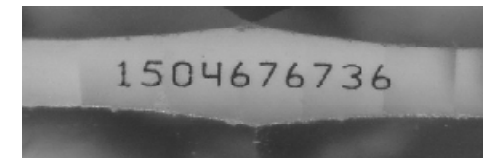
ISO 9001-2000 / -IQNet-

INTERNATIONAL CLARITY SCALE

Flawless	Internally Flawless
Very Very Slight Inclusion	VVS1 VVS2
Very Slight Inclusion	VS1 VS2
Slight Inclusion	SI1 * SI2 * SI3
Inclusion	I1 I2 I3

INTERNATIONAL COLOR SCALE

Colorless	* D * E F
Near Colorless	G H I J
Tinted White	K L M
Very Light Yellow	N O P Q R
Light Yellow	S-Z
Fancy Yellow	



Note: EGL watermark will appear under UV source.

Online verification service at:
www.eglhk.com.hk

