

Report Number : EGL1504650223

August 28, 2017



EUROPEAN GEMOLOGICAL LABORATORY

**GRADING RESULTS**

Natural Diamond  
 Shape & Cut Style **Round Brilliant**

Carat Weight **0.72 Ct.**

Color Grade **D**

Clarity Grade **SI 1**

Cut Grade **Very Good**

**ADDITIONAL GRADING INFORMATION**

Measurements **5.61 - 5.51 x 3.67 mm**

Polish **Excellent**

Symmetry **Excellent**

Fluorescence **None**

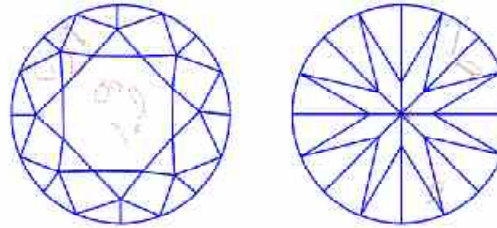
**COMMENTS**

- Report number appears on the girdle.

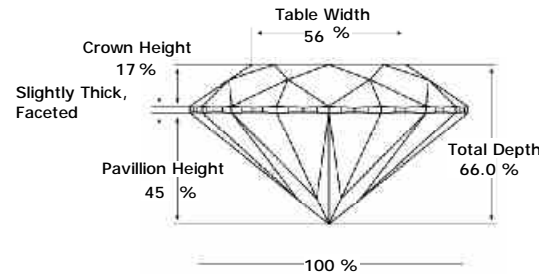
**Clarity Representation - Magnification: x10**

Internal characteristics shown in red. External characteristics and naturals shown in green. Extra facets shown in black. Symbols indicate nature and

in girdle, minor bearding, and minor details of polish and finish not shown.



**PROPORTIONS DIAGRAM**



\* Profile for representation purposes only

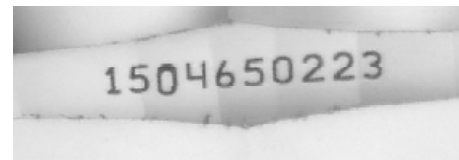
**ISO 9001-2000 / -IQNet-**

**INTERNATIONAL CLARITY SCALE**

**INTERNATIONAL COLOR SCALE**

Flawless	Internally Flawless
Very Very Slight Inclusion	VVS1
	VVS2
Very Slight Inclusion	VS1
	VS2
Slight Inclusion	<b>* SI 1 *</b>
	SI2
	SI3
Inclusion	I1
	I2
	I3

Colorless	<b>* D *</b> E F
Near Colorless	G H I J
Tinted White	K L M
Very Light Yellow	N O P Q R
Light Yellow	S-Z
Fancy Yellow	



Note: EGL watermark will appear under UV source.

Online verification service at:  
[www.eglhk.com.hk](http://www.eglhk.com.hk)

