

Report Number : EGL1504649837

August 28, 2017



EUROPEAN GEMOLOGICAL LABORATORY

## GRADING RESULTS

Natural Diamond	
Shape & Cut Style	Round Brilliant
Carat Weight	0.71 Ct.
Color Grade	E
Clarity Grade	SI2
Cut Grade	Excellent

## ADDITIONAL GRADING INFORMATION

Measurements	5.61 - 5.58 x 3.55 mm
Polish	Excellent
Symmetry	Excellent
Fluorescence	Faint

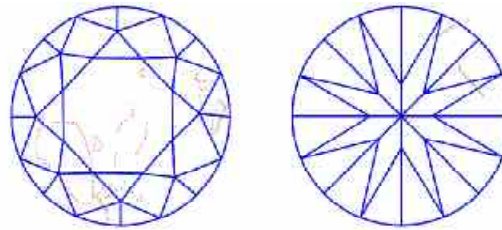
## COMMENTS

- Report number appears on the girdle.
- "EXCELLENT IDEAL CUT"-The quality of the cut of this diamond achieves Excellence in symmetry and proportions, thus obtaining the optimal dispersion of light and brilliance.

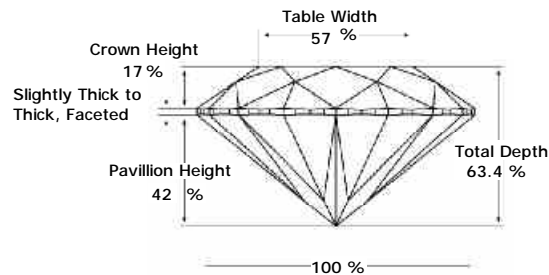
## Clarity Representation - Magnification: x10

Internal characteristics shown in red. External characteristics and naturals shown in green. Extra facets shown in black. Symbols indicate nature and

in girdle, minor bearding, and minor details of polish and finish not shown.

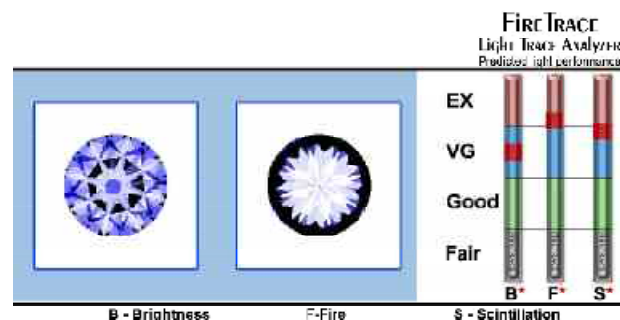


## PROPORTIONS DIAGRAM



\* Profile for representation purposes only

## LIGHT PERFORMANCE



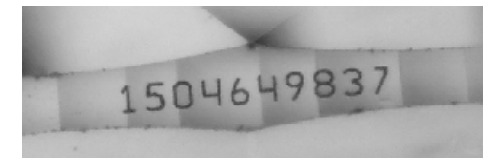
## ISO 9001-2000 / -IQNet-

### INTERNATIONAL CLARITY SCALE

Flawless	Internally Flawless
Very Very Slight Inclusion	VVS1 VVS2
Very Slight Inclusion	VS1 VS2
Slight Inclusion	SI1 * SI2 * SI3
Inclusion	I1 I2 I3

### INTERNATIONAL COLOR SCALE

Colorless	D * E * F
Near Colorless	G H I J
Tinted White	K L M
Very Light Yellow	N O P Q R
Light Yellow	S-Z
Fancy Yellow	



Online verification service at:  
[www.eglhk.com.hk](http://www.eglhk.com.hk)

Note: EGL watermark will appear under UV source.