

Report Number : EGL1503511622

October 06, 2016



EUROPEAN GEMOLOGICAL LABORATORY

GRADING RESULTS

Natural Diamond
 Shape & Cut Style **Round Brilliant**
 Carat Weight **1.03 Ct.**
 Color Grade **F**
 Clarity Grade **VS1**
 Cut Grade **Excellent**

ADDITIONAL GRADING INFORMATION

Measurements **6.46 - 6.43 x 3.86 mm**
 Polish **Excellent**
 Symmetry **Excellent**
 Fluorescence **None**

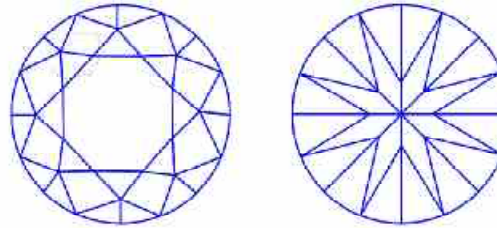
COMMENTS

- Report number appears on the girdle.
- "EXCELLENT IDEAL CUT"-The quality of the cut of this diamond achieves Excellence in symmetry and proportions, thus obtaining the optimal dispersion of light and brilliance.

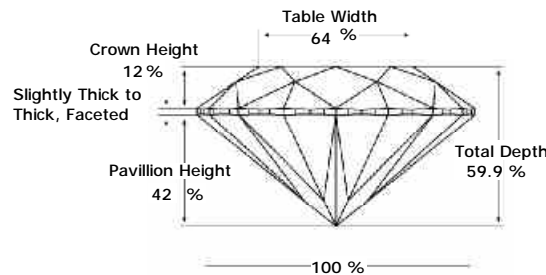
Clarity Representation - Magnification: x10

Internal characteristics shown in red. External characteristics and naturals shown in green. Extra facets shown in black. Symbols indicate nature and

in girdle, minor bearding, and minor details of polish and finish not shown.

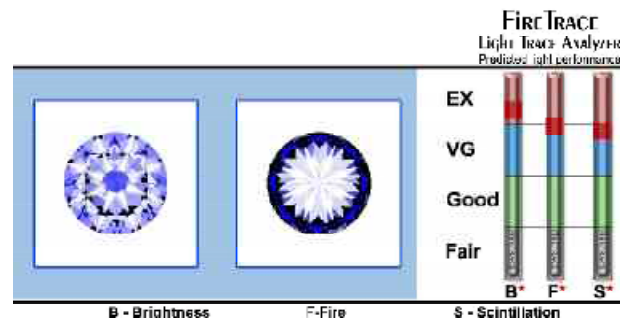


PROPORTIONS DIAGRAM



* Profile for representation purposes only

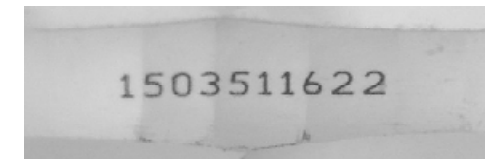
LIGHT PERFORMANCE



Note: EGL watermark will appear under UV source.

**ISO 9001-2000 / -IQNet-
 INTERNATIONAL CLARITY SCALE INTERNATIONAL COLOR SCALE**

Flawless	Internally Flawless	Colorless	D E * F *
Very Very Slight Inclusion	VVS1	Near Colorless	G H I J
	VVS2		Tinted White
Very Slight Inclusion	* VS1 *	Slight Inclusion	
	VS2		Light Yellow
Inclusion	S11		
	S12		
	S13		



Online verification service at:
www.eglhk.com.hk